

PENTAX

Digital High Resolution Video Endoscopy



90K SERIES

Image Improvement

90K Series

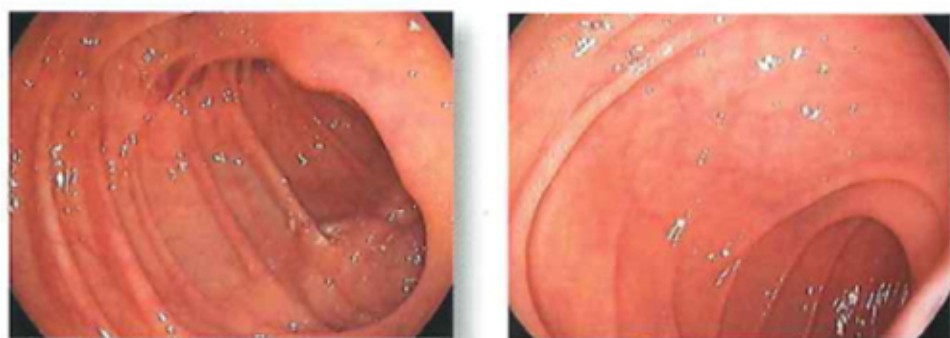
Better fit, user friendly ergonomic control body.

Improved in color, brightness uniformity and viewing area.

The 90K scopes provide superior imaging with resolution quality higher than any other base model in the market.

Coupled with the EPK-i Digital Processor, you get unparalleled image clarity.

And the advantage of that is clear: the better you can see, the more confident you can be in your diagnostic decisions.



VIDEO UPPER GI SCOPE

EG-2990K

Outstanding performance characteristics

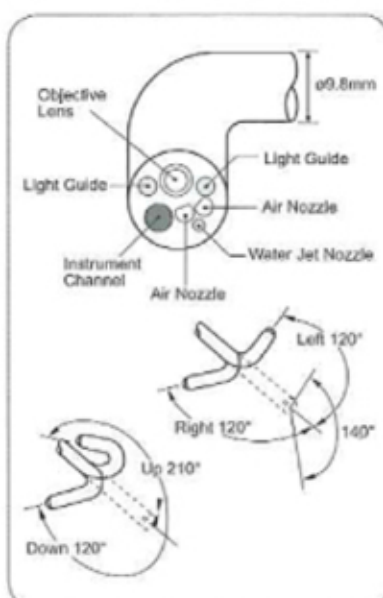


- A minimum instrument channel width of ϕ 2.8 mm makes a wide range of treatments possible.
- Achieves optimum orientation through a tip deflection of Up 210°, Down 120°, Right/Left: 120° and a wide field of view of 140°.
- Equipped with a unique water jet channel system that can clearly identify areas where there are lesions or bleeding.

Specifications

Field of View (°)	140	
Depth of Field (mm)	4 ~ 100	
Tip Deflection	Up-Down (°)	210 - 120
	Right-Left (°)	120 - 120
Rigid Distal Width (mm)	ϕ 10.2	
Insertion Tube Width (mm)	ϕ 9.8	
Minimum Instrument Channel Width* (mm)	ϕ 2.8	
Working Length (mm)	1050	
Total Length (mm)	1373	

* There is no guarantee that instruments selected solely using this minimum instrument channel width will be compatible in combination.



VIDEO COLONOSCOPES

EC-3490LK/FK/MK

Outstanding performance characteristics

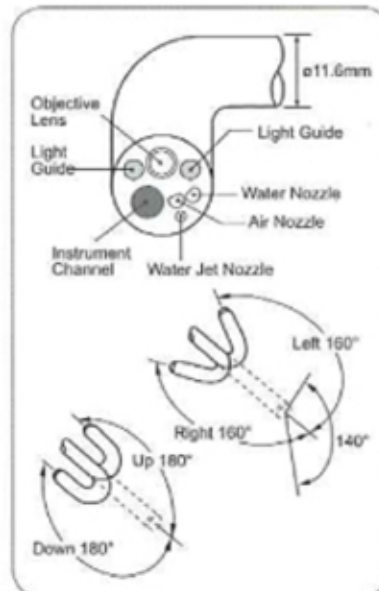


- Supports highly accurate endoscopic examinations with excellent observation capabilities and insertion performance through high resolution images and a 140° field of view.
- Equipped with a unique water jet channel system that can clearly identify areas where there are lesions or bleeding.

Specifications

Field of View (°)	140	
Depth of Field (mm)	3 ~ 100	
Tip Deflection	Up-Down (°)	180 - 180
	Right-Left (°)	160 - 160
Rigid Distal Width (mm)	ø11.5	
Insertion Tube Width (mm)	ø11.6	
Minimum Instrument Channel Width* (mm)	ø3.8	
Working Length (mm)	1700(LK)/1500(FK)/1300(MK)	
Total Length (mm)	2023(LK)/1823(FK)/1623(MK)	

* There is no guarantee that instruments selected solely using this minimum instrument channel width will be compatible in combination.



EC-3890LK/FK/MK/FK2/MK2

Outstanding performance characteristics

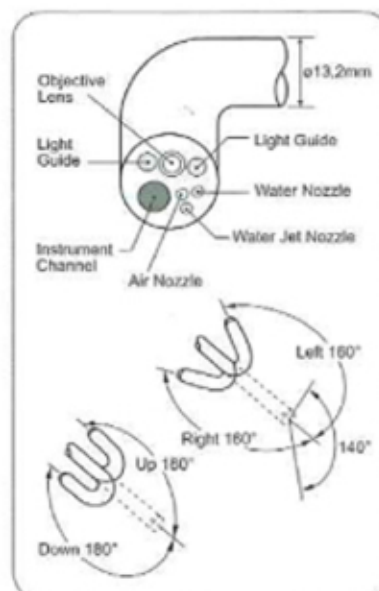


- A routine colonoscope equipped with a large channel width of ø 4.2 mm.
- Supports highly accurate endoscopic examinations with excellent observation capabilities and insertion performance through high resolution images and a 140° field of view.
- Equipped with a unique water jet channel system that can clearly identify areas where there are lesions or bleeding.

Specifications

Field of View (°)	140	
Depth of Field (mm)	3 ~ 100	
Tip Deflection	Up-Down (°)	180 - 180
	Right-Left (°)	160 - 160
Rigid Distal Width (mm)	ø13.2	
Insertion Tube Width (mm)	ø13.2	
Minimum Instrument Channel Width* (mm)	ø4.2	
Working Length (mm)	1700(LK)/1500(FK/FK2)/1300(MK/MK2)	
Total Length (mm)	2023(LK)/1823(FK/FK2)/1623(MK/MK2)	

* There is no guarantee that instruments selected solely using this minimum instrument channel width will be compatible in combination.



PENTAX

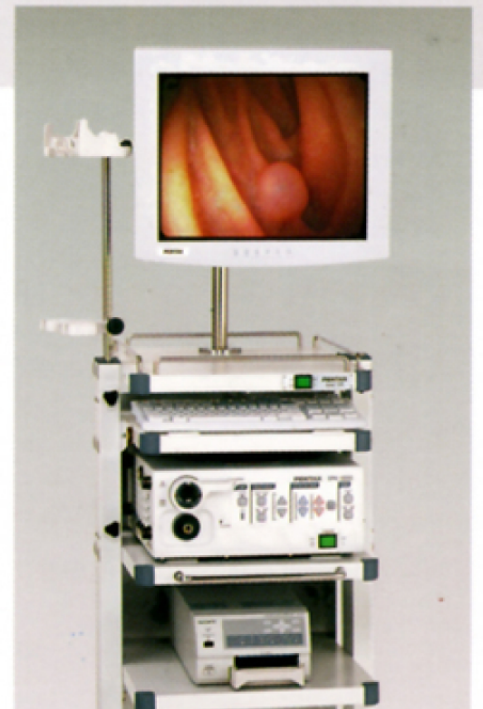
DIGITAL COLOR VIDEO PROCESSOR

EPK-1000



Compact, Lightweight Digital Color Video Processor for High Resolution, Large Screen Images

Digital processing of video signals produces endoscopic images with enhanced brightness and resolution. For optimal clarity during endoscopic examinations, the EPK-1000 system provides crystal clear, full-screen color images on the monitor, visible even from a distance. In addition, the compact, lightweight design has a smaller footprint and is the perfect solution for users of endoscopic systems with limited space. The EPK-1000 system is used with all K-Series Color Chip Video Endoscopes.



DIGITAL COLOR VIDEO PROCESSOR

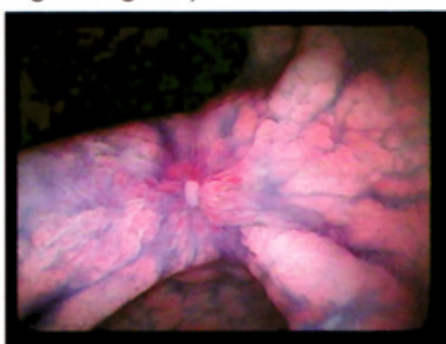
EPK-1000



This system produces
full-screen images
on the monitor, and
the compact design is
easy to use.

*Optimized Color Adjustment to Facilitate Examination and Treatment

Color adjustment is carried out by a digital signal processor (DSP), which automatically optimizes the color for examination and treatment, regardless of the type of endoscope used. The EPK-1000 system automatically switches into shutter mode for close-up still images, thus minimizing camera movement when capturing still images.



*Customized Keyboard

The EPK-1000 system comes with its own keyboard for easier, faster input. There are large, clearly marked function and command keys to control essential endoscope functions and peripheral equipment, such as color printers and video recorders. These keys are positioned according to their frequency of use.



*Full Range of Output Connectors

The EPK-1000 system supports a variety of peripheral equipment through a full range of video output connectors, including RGB and Y/C. There is also a serial connector for transferring still images to a personal computer, and trigger output connectors and an RS-232C interface for controlling external devices.

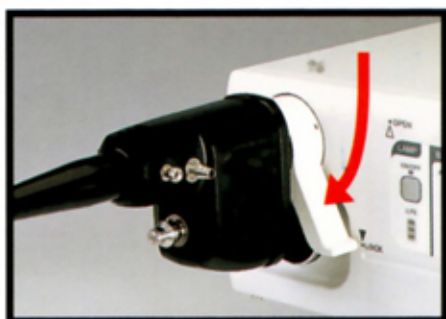


*Compact, Lightweight Design

This compact video processor unit weighs just 15 kg (33.1 lb) and measures 380 mm (14.9 inches) wide by 155 mm (6.0 inches) high by 420 mm (16.5 inches) deep. It fits in a custom system rack (SMC-V9) to maximize portability and minimize installation space.

*New Lever-type Attachment Mechanism

A newly designed lever system allows the scope to be connected to or disconnected from the processor quickly and easily at a single touch.



Specifications

Color System	Single-CCD color	
Lamp	100W Xenon short arc	
Auxiliary Lamp	1W LED (CLASS 1 LED PRODUCT)	
Video Output	2 RGBS connectors, 2 Y/C connectors, 1 composite video connector	
External Device Controls	1 printer control connector, 2 external device control connectors	
Digital Output	1 serial connector	
Power Requirements	Voltage	120V (NTSC) 230V (PAL)
	Power Consumption	2.0A 1.0A
	Frequency	50/60Hz
Dimensions	380(W) x 155(H) x 420(D)mm / 14.9(W) x 6.0(H) x 16.5(D)in	
Weight	15kg	

PENTAX

HOYA Corporation PENTAX Tokyo Office

2-36-9 Maeno-cho, Itabashi-ku, Tokyo 174-8639 Japan TEL +81-3-3960-5155 FAX +81-3-5392-6724

PENTAX Medical Company (A Division of PENTAX of America, Inc.)

102 Chestnut Ridge Road, Montvale, New Jersey 07645 U S A Toll-free +1-800-431-5880 TEL +1-201-571-2300 FAX +1-201-391-4189

PENTAX Europe GmbH

Julius-Vosseler-Strasse 104, 22527 Hamburg, Germany TEL +49-40-561 920 FAX +49-40-560 42 13

URL www.medical.pentax.co.jp

CAUTION Federal (U S A) law restricts this device to sale by or on the order of a physician or other appropriately licensed medical professional

*Specification and design are subject to change without notice due to product improvement